



Newsletter: Spring 2008

## Marina Matters

### INSIDE THIS EDITION

Sport into Summer with the Sea Ray Sport Boat Range	Alexandrina Cove - The Ultimate Lifestyle Address	Oscar W - 100 year celebrations
Temporary Barrier Needed NOW	Knot Just Knitting	Wildlife Link
Coorong Access restored	Drystack and Playground works complete	Back to Boating
Haines Hunter - Trailerable convenience	Clean Marina /ISO14001 Audit	Know your Markers
Local Photography encapsulated on canvas	Club Marina Holidays	From the Galley

### Sport into Summer with the Sea Ray Sport Boat Range

Sea Ray is known for its luxury cruisers and yachts but they also have a great range of sports boats.

Sea Ray Sales SA have some of the best of this range available now at prices that will amaze even the most well informed purchaser.

The sexy **175 Sport** is available with; 3.0L Alpha I MCM (135 PHP), Mackay MLKR Trailer, Canvas package, Bimini Top w/Boot & Vertical Storage, Power assisted steering, Battery On/Off Switch for **ONLY \$29,990**

Our sport boat range also includes the **185** and the spacious **205 Sport**.

The **205 Sport** is available now with; 5.0L Alpha I MCM (260 PHP) Galvanized trailer with disc brakes and swing tongue, Bimini top w/boot & vertical storage, Canvas package, Power assisted steering, Battery On/Off Switch for **ONLY \$50,999**

Contact Sea Ray Sales SA today on 8555 7333 to book your inspection.



### Alexandrina Cove -The Ultimate Lifestyle Address



The Fleurieu Peninsula's premium new lifestyle/retirement village is now only a month or two away with building in the first stage due to be completed by early December.

Located at Vesta Drive in The Marina Hindmarsh Island, this new \$50million development is spread over five hectares of prime Marina real estate. The project will incorporate 116 Homes a 1200m2 Community Building, Tennis Court, Bowling/Croquet green and multi purpose BBQ lawn areas.

Alexandrina Cove is about to set a new bench mark in retirement/lifestyle living for the over 55's on the South Coast. The premium homes are all between 180m2 and 240m2 and are available in two or three bedroom with a mix of both single and double garages. Luxury appointments include porcelain or timber floors, ducted r/c air conditioning, ducted vacuuming, 9ft ceilings, Granite yes Granite bench tops to the kitchen, Omega and Blanco European appliances inc. dishwasher, fibre optic to the homes incorporating media centres and large LCD flat screen televisions, a first in SA. The homes also offer a very large external living area under the main roof. As we have already stated these homes will create a new bench mark for villages on the South Coast.

The village will be gated providing the added peace of mind for residents. With intercom and video systems connected from the main gates to each individual home you can be assured of your privacy and security.

Being the only Marina waterfront lifestyle/retirement village in South Australia, this village is sure to continue to create a huge amount of interest from discerning buyers.

This vibrant new village will have undeniable features and benefits all being within one hour drive from Adelaide. Let's also not forget our picturesque nearby towns of Goolwa, Middleton, Port Elliot and Victor Harbor. We are sure you have worked long and hard to reach this stage of your life so we believe you deserve the best Alexandrina Cove.

Register your interest today by contacting Richard Joy or Annie Bauer today on 8555 7300 or by email [realestate@tmhi.com.au](mailto:realestate@tmhi.com.au). If you are currently residents of The Marina, Richard and Annie will also be in the best position to help you market and sell your existing home to enable you to have an easy transition into luxury at Alexandrina Cove.

## Oscar W - 100 year Celebrations



Oscar W 1908 - 2008

The Oscar W, proudly sponsored by The Marina Hindmarsh Island is celebrating its centenary this year and festivities have been in full swing over the last month.

Between September 20 and 28 the Oscar W and the Marion cruised up river to Mannum and Swan Reach. However, it was the October Long Weekend in Goolwa which was the high point of celebrations. Over the weekend the Oscar W celebrated the recommissioning in conjunction with the Goolwa Alive Festival. Visitors were given the opportunity to experience; a ride on the Steam Ranger, wood loading and splitting, rope throwing, old machinery and vehicles, timber boats, food, drinks and a lot more but the favourite attraction was definitely the cruises offered on the historic paddle steamer. The Mayor of Echuca visited Goolwa for the re-commissioning. Mr Rolly Bartlett was honoured with the appointment of Hon Patron of the Oscar W at the ceremony, in recognition of his enduring and incredible effort for the restoration and repair work which he has undertaken in conjunction with many volunteers.

The final celebrations are to be held later this month on October 18 and 19 at Echuca where the Oscar W was built.

## Temporary Barrier Needed NOW

We have been working towards an engineering solution to the low water in Goolwa over the last six months.

The Marina Hindmarsh Island has released a discussion paper that investigates the construction of a temporary barrier at three locations upstream of Goolwa to allow Goolwa's pool level to be dealt with in isolation.

After receiving support from SABA (Southern Alexandrina Business Association) and a number of proactive residents in the Goolwa community, the concept of a temporary barrier at Laffin Point has gained momentum.

The temporary barrier would allow the Goolwa area to be topped up with high tide saltwater from the Goolwa Channel through the Goolwa barrage and give boaties access through the Goolwa lock to the Coorong.

The barrier will prohibit saltwater flooding the Currency Creek and Finniss River habitats that rely on the fresh water inflows.

For more information visit [www.goolwaneedswaternow.com.au](http://www.goolwaneedswaternow.com.au)

## Knot Just Knitting



Do you like to knit and crochet?

Would you like to meet others who do the same?

Come along and enjoy a morning of good company and great coffee at the Island Cafe.

All skill levels welcome.

Second and fourth Mondays of each month.

10am to 12noon

Phone Mardi Robson on 0458 693 297

## WVO's Wildlife Link

Marina residents have probably noticed a sharp decline in the black swan population and from reports cygnets are still yet to be seen, although there is still time. Thank you to the residents who keep me informed about the local wildlife, especially about the swan nest just by the Hindmarsh Island bridge (although the parents seem to have left the nest). The fresh water birds are doing it a bit tough, the pelicans and cormorants are still a sight to behold. These two birds have a relationship which help each other gather fish together when feeding. Over recent weeks I have seen great rafts of them together on the sand flats.

The pelicans can now be seen with breeding colours on their bills. The birds have a prominent dark and yellow stripe which runs right down the pouch and makes the bird look very handsome. It will be interesting to see if the pelicans will still breed down the Coorong this year, if fish is plentiful then they will.

It is baby bird season for most birds at this time of year, so please slow down on the roads if you see birds ahead. The young birds are slower to respond and need a few more seconds of your time to get out of the way. Thank you for caring for our local wildlife and remember to always report early.

Rena Robinson

Wildlife Welfare Organisation - CEO



### Coorong Access restored



It has just been announced that restrictions on access through the Murray Mouth dredging Exclusion Zone are to be temporarily lifted from Saturday October 4 to Sunday April 26, 2009.

This is a great thing for boating especially coming into the summer months. Boaties are however warned of varying water depths, strong tidal currents, waves, shifting sand bars and shallow water.

The Marina Hindmarsh Island is working hard with the local authorities to also try and get the Goolwa lock opened to restore Goolwa's access to the Coorong area. However, much of this is dependant on the success of the temporary barrier.

### Drystand and Playground works complete



The Marina Hindmarsh Island's Drystand boat storage area has had a minor facelift completed at the end of August. The busy area was rearranged for the convenience of boat owners and to assist in accommodating the increased number of users. The trees on the southern fence have also been trimmed.

The playground area near Rankine's Landing has also recently had some work done with the a sail erected over the eastern side. The sail will give good protection to eastern grass area and park bench allowing parents to overlook the children in shade and safety.

### Back to Boating

Over the winter many choose not to brave the conditions and use their boat however, with Spring in full swing and Summer fast approaching many will be heading out on their boat for the first time in some months. To ensure that this is an enjoyable and safe experience it is important that safety equipment and mechanics are checked thoroughly in advance. Call The Marina Hindmarsh Island today on 8555 7300 to book in a service check now so that the boat is ready as soon as you are.

Handy Check list;

- Keep a maintenance log
- Check navigation lights
- Check anchor
- Check bilge pumps
- Wear, don't stow life jackets
- Check distress flares are in date
- Check marine radio operation
- Check batteries
- Check fuel is 'fresh' (fuel goes off)
- Check you have ample water provisions
- Check ALL safety gear aboard



### Haines Hunter - Trailerable convenience



What better way to take advantage of the newly restored access to the Murray Mouth dredging Exclusion Zone than to purchase a trailerable Haines Hunter.

Whether you'd like to head out to the Coorong or launch from Victor Harbor the possibilities are endless when you have a Haines Hunter built for power, comfort and convenience.

**Massive Sell Out** - At present we are having a massive Sell Out Sale on all Haines Hunter stock and there are big benefits to buying NOW.

SAVE UP TO \$7,000

<b>470 Breeze</b>	Was 32,224	<b>NOW \$29,990</b>
<b>495 Breeze</b>	Was 38,088	<b>NOW \$36,088</b>
<b>520 Breeze</b>	Was 42,937	<b>NOW \$39,990</b>
<b>520 Prowler</b>	Was 42,040	<b>NOW \$37,500</b>
<b>530 Classic</b>	Was 46,960	<b>NOW \$39,990</b>

Contact us today on 8555 7300 to arrange your personal inspection.



### Clean Marina / ISO 14001 Audit

The Marina Hindmarsh Island has been recognized and rewarded for its excellence in and ongoing commitment to sustainable environmental practices with the EPA having just renewed its accredited licence.

The Marina Hindmarsh Island was the first business in South Australia and the first marina in Australia to gain an EPA Accredited Licence in August of 2007.

To be eligible for the Accredited Licence, an organisation must have an Environmental Management System in place (such as ISO14001), be able to provide an excellent record of environmental performance and have an active EPA approved environmental audit and compliance program.

The Marina Hindmarsh Island has also had its certification renewed with Marina Industry Association of Australia, certified as a Clean Marina. These renewed accreditations reinforce the fact that The Marina Hindmarsh Island leads the way in environmental practice and is setting the example for marinas around Australia to follow suit.



### Know your markers

With low water levels making channels shallower and possibly narrower, it is important that skippers are aware of markers on the water. To avoid running aground and colliding with hazards and other water users, it is important to understand these marks and operate in accordance with them. The 'Buoys, Marks and Beacons' sticker shown below is available from The Marina Hindmarsh Island and can be fixed to vessels for quick reference.



### Goolwa Channel Markers

The Department of Transport have conducted a large amount of work in recent months to improve the markers within the Goolwa Channel. The result of this great work has seen many of the existing channel markers moved and many more new markers installed including the marking of the latest Goolwa Channel. The Aggies Creek channel is marked by channel markers A1- A9, it begins West of the main Marina entrance and connects with the main Goolwa channel before the Hindmarsh Island Bridge.

Minister for transport Patrick Conlon advises that boaters should take care to familiarise themselves with the realigned channel and maintain a reduced speed whilst negotiating it. An unofficial guide to these new channels is available from The Marina Hindmarsh Island reception for those interested.

### Local photography encapsulated on canvas

Local photographer Sally Grundy has found a new way to bring her great photographic skills into the home with the collection of photograph based prints on canvas.

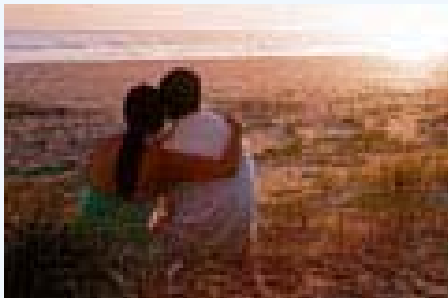
Sally's photography is bound o appeal to lovers of the area with majority of the images depicting views in and around Hindmarsh Island, Goolwa, the Coorong and her very own Mundoo Island property.

The prints are available in various sizes and can be custom ordered from pictures on display at The Marina Hindmarsh Island.

For more information contact reception on 8555 7300.



### Club Marina Holidays - Enjoy the Brilliant Spring Weather while it lasts



There is no doubt spring is truly when this area comes alive.

Imagine lying on the balcony of your 4.5 star waterfront apartment in piece and quiet with no plans but to finish reading the magazine you have in front of you.....

Club Marina Holidays can bring this picture to life from only \$145 per night.

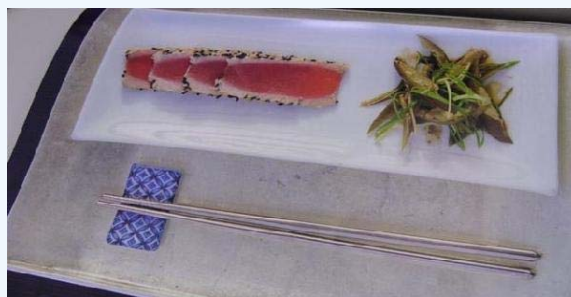
Contact us today on 8555 7300 to escape in luxury and make the most of the brilliant spring weather while it lasts.

### From the Galley - Sesame coated seared Tuna with steamed Eggplant, Soy and Ginger

- 2 tablespoons white sesame seeds
- 1 tablespoon black sesame seeds
- pinch salt
- 400g tuna
- peanut oil for cooking
- 4 Japanese eggplants
- 75ml light soy
- 25ml peanut oil
- 1 teaspoon sesame oil
- 4cm piece ginger
- 2 long green onions

Mix the sesame seeds with salt and coat the tuna steaks on both sides. Heat the oil in a frypan and cook the tuna on both sides for 1 - 2 minutes to crisp the sesame seeds and just sear the tuna. Set aside.

Slice the eggplants into quarters long ways. Mix together the soy, peanut and sesame oil, pour a little over the eggplant and leave to marinate for an hour or



so. Peel and finely slice the ginger and slice the onions. Place the eggplants into a steamer basket and steam for 5 -10 minutes until soft. Allow to cool then slice and toss with ginger, onion and more dressing.

Serve with the thinly sliced tuna.

You can modify your preferences or unsubscribe from our email mailing list by [clicking here](#)

If you wish to stop receiving email communications from us, please [unsubscribe](#) using the feature above and your email address will be removed from our email mailing list. If you do not unsubscribe via this message, or future messages, your email address will remain active on our email mailing list, and this will be taken as implied consent to receiving email communications from us.